

ASUS PAD

Screen Saver SOP

Version: 1.x.x

Model: ASUS MEMO Pad ME301T

Language: Multi-Language

Step1 – Download Screensaver files

1. Download ME301 Screensaver file from “ASUS DEMO Program Resource Site”

Link: http://www.asus.com/microsite/demo/MeMO_Pad_Smart.htm



ASUS DEMO Program Resource Site

ASUS MeMO Pad Smart 10"

Follow the steps below to finish your demo program setup.

[Back](#)

[Asus Default Screensaver SOP :](#)

For those stores don't attend Demo Program, you can also initiate default screensaver by the following SOP. *Note :This screensaver is different from the above Live or Regular Demo contents' auto - run screensaver.

Asus Screensaver SOP ME301T.pdf

[Screen Saver Installation](#)

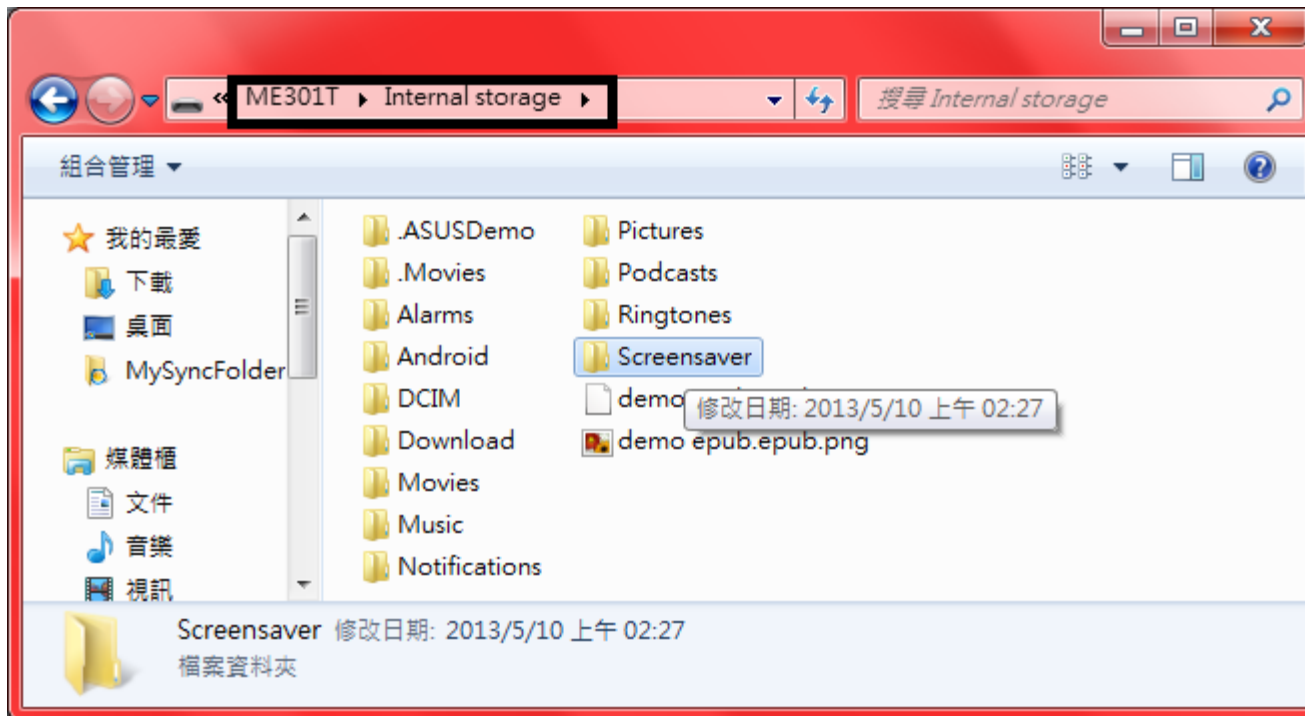
Please download the screen saver file below

ME301 Screensaver

Step1 – Download Screensaver files

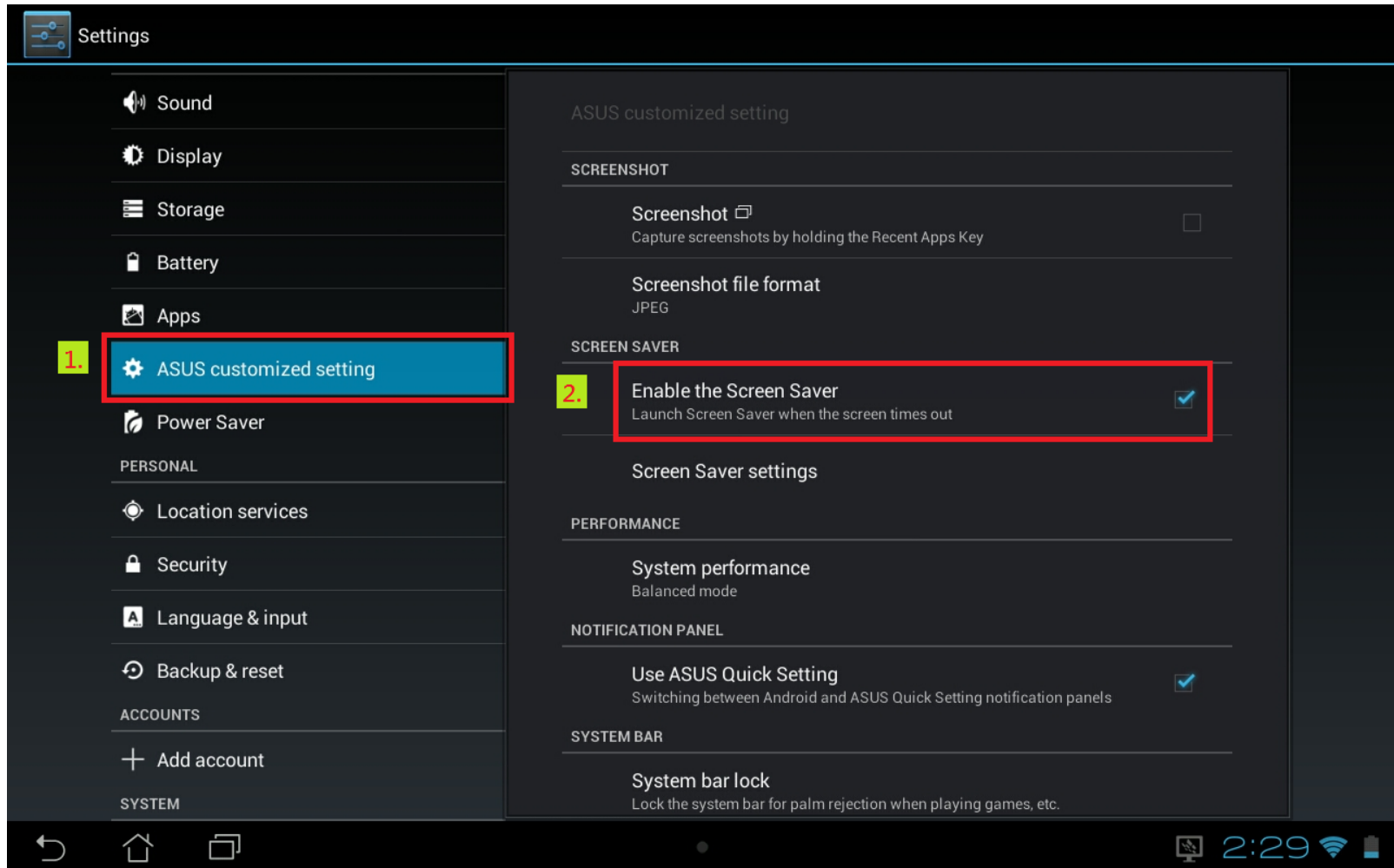
2. *Unzip ME301_Screensaver_0503.zip to ME301 internal storage

*Choose [**Extract Here**] to unzip ME301_Screensaver_0503.zip file and copy [Screensaver] folder to ME301 internal storage



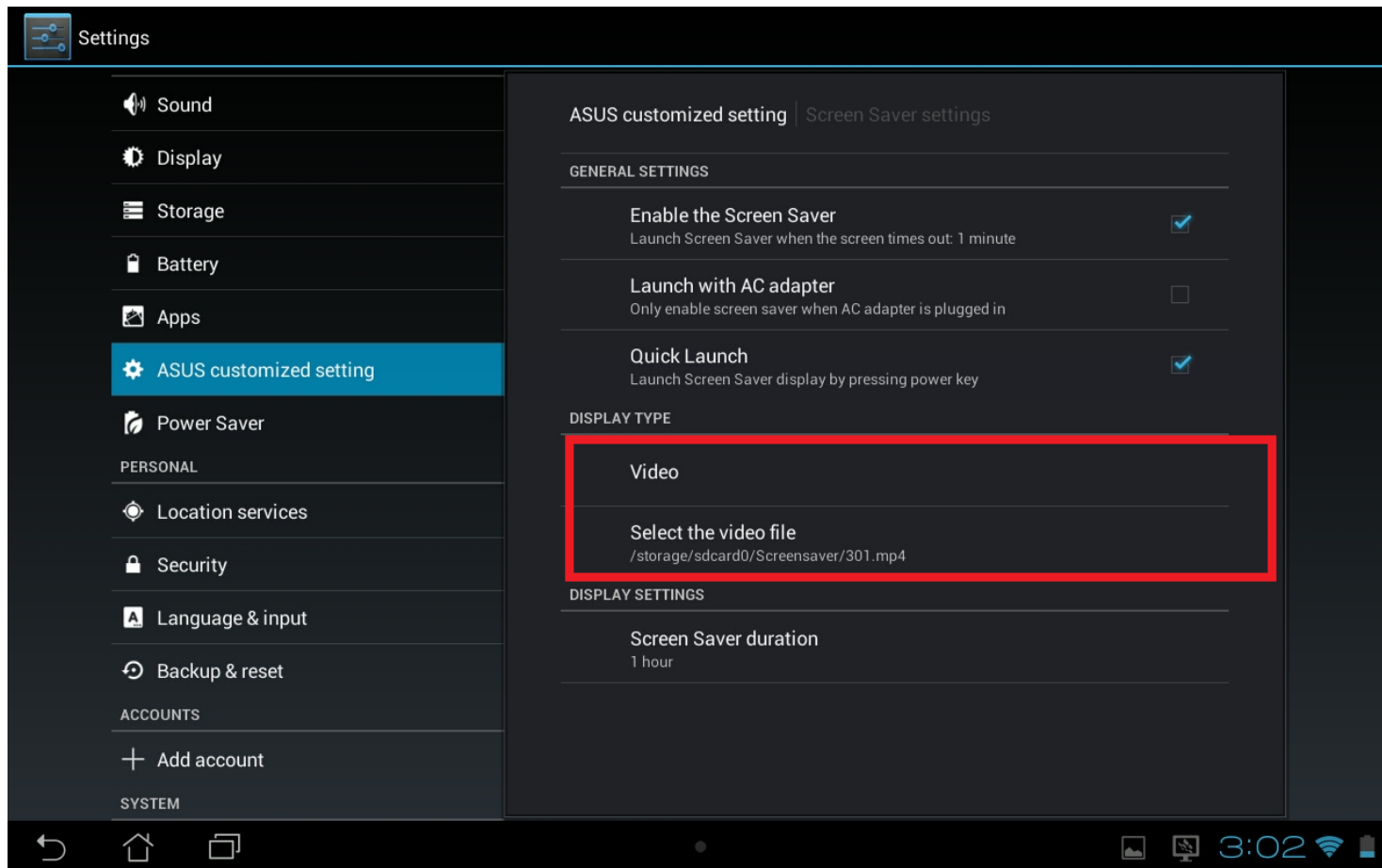
Step2 – Enable Screen Saver

Settings → ASUS customized setting → Enable the Screen Saver



Step3 – Select Screensaver Display Type

- Settings → ASUS customized setting → Screen Saver settings
- Check [Enable the Screen Saver] & [Quick Launch]
- Display type select “Video”
- Select the video file location: /storage/sdcard0/Screensaver/301.mp4

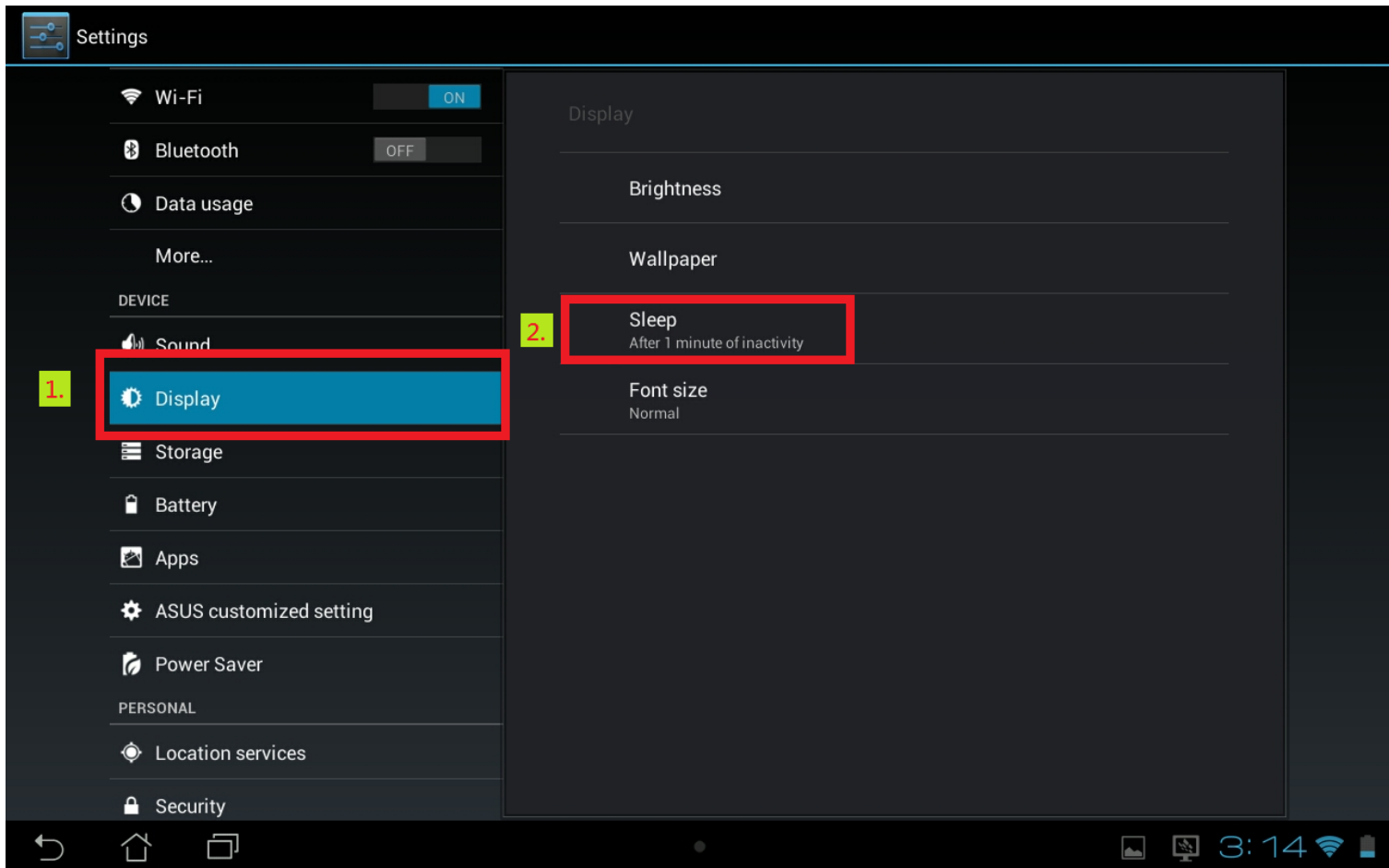


Step4 – Screen Saver settings

- General Settings
- Enable the Screen Saver

Launch Screen Saver when the screen times out

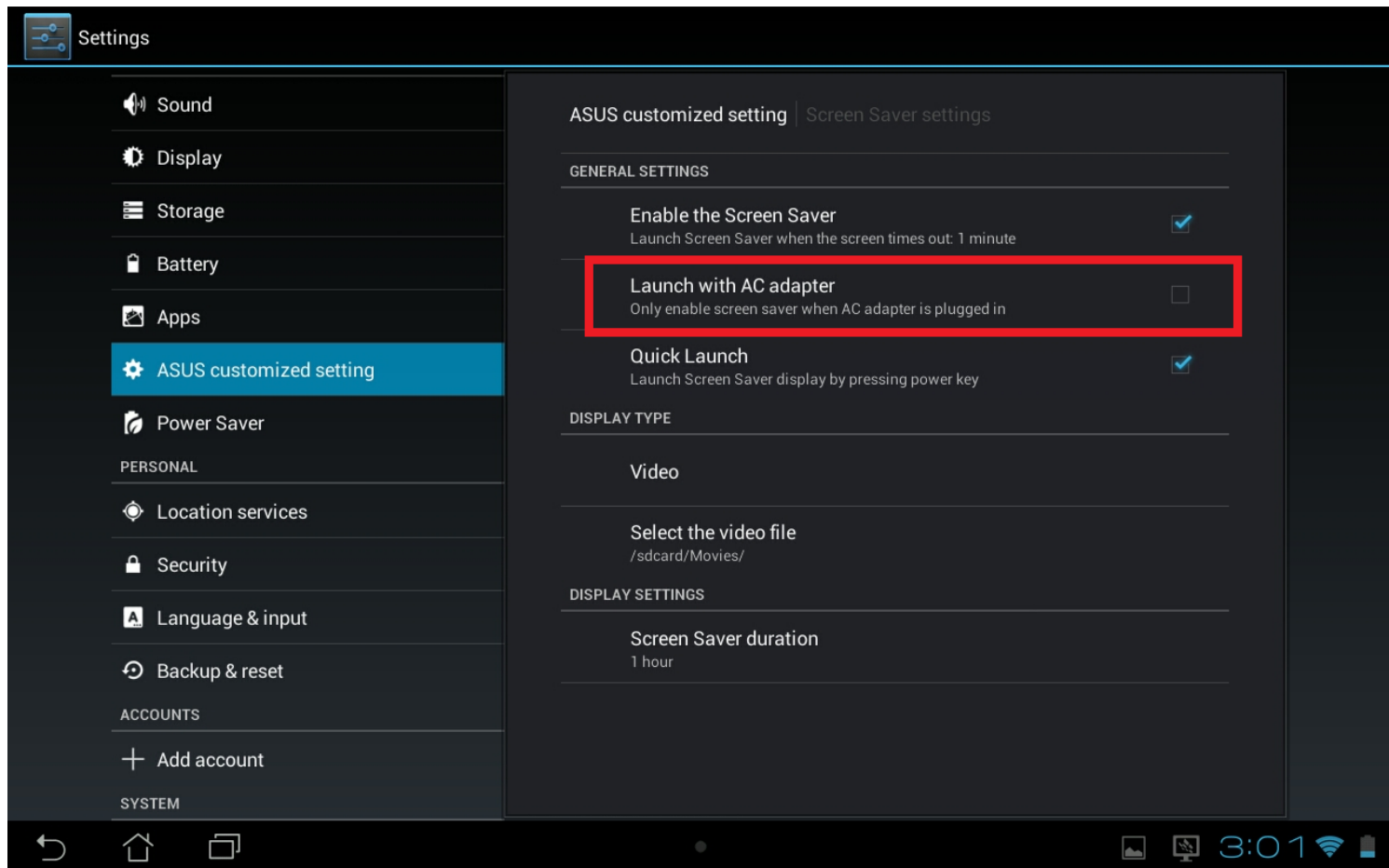
(Time out =The device goes into sleep mode and it based on the setting of Sleep)



Step5 – Screen Saver settings

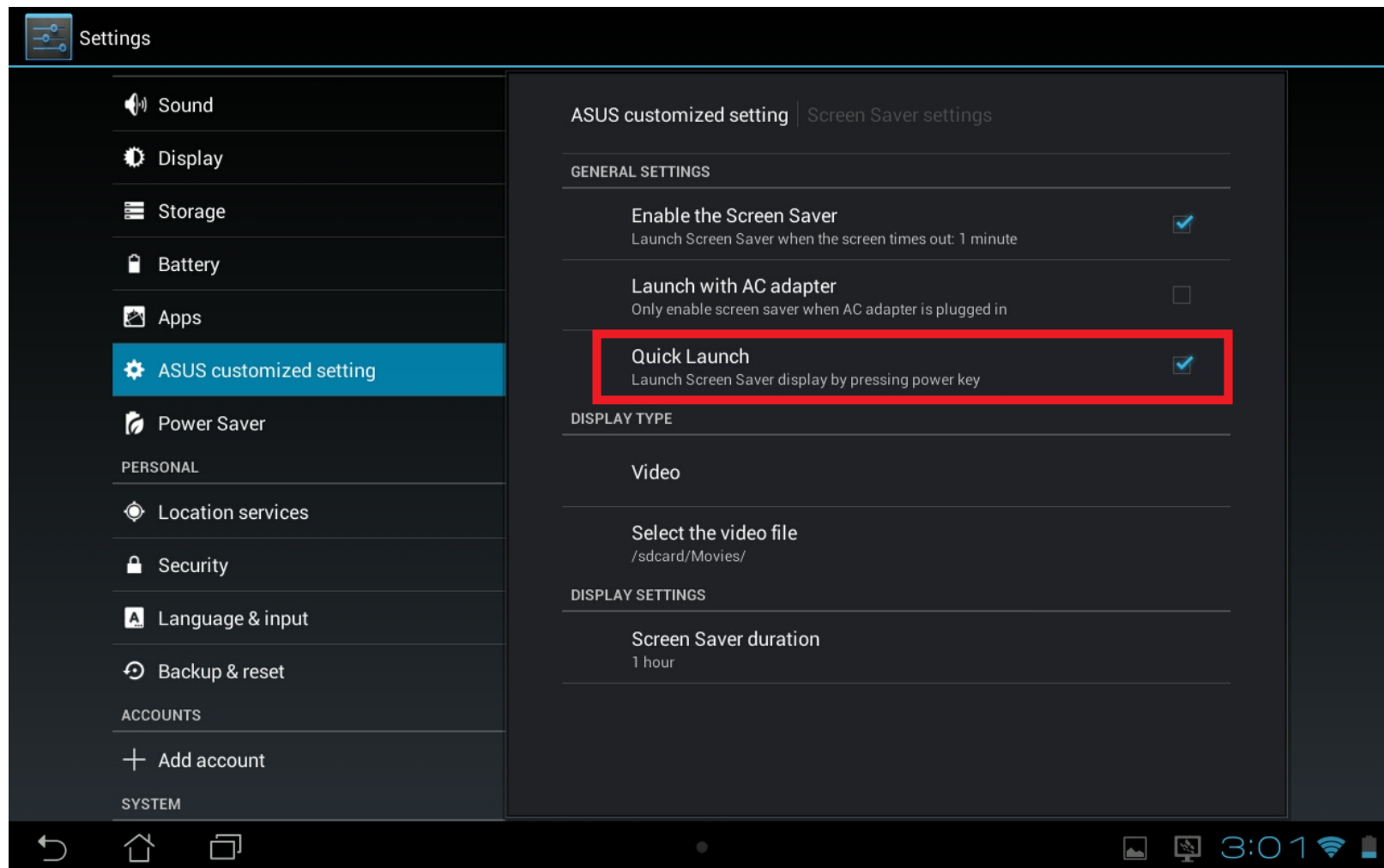
- General Settings
- If you enable “Launch with AC adapter”

Need to plug the charger when the screensaver is playing to ensure ample power for your device.



Step6 – Screen Saver settings

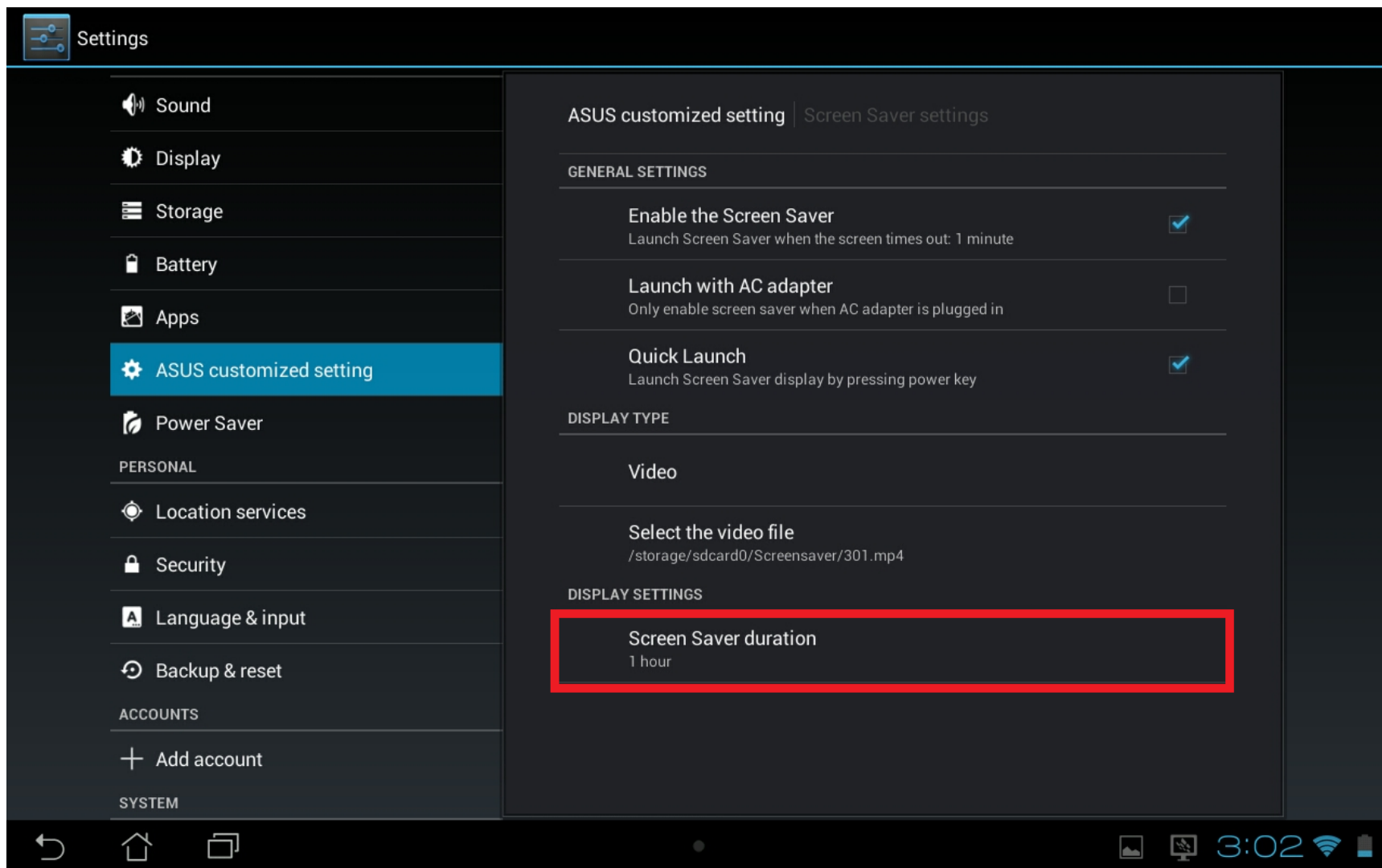
- General Settings
- If you enable “Quick Launch “
Launch Screensaver display by pressing power key



Step7 – Screen Saver settings

- Display Settings

You can set Screen Saver duration (30 minutes,1 hour..)



THANK YOU

ASUS[®] Inspiring Innovation · Persistent Perfection